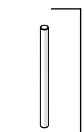
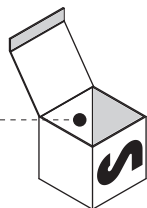
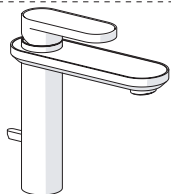


Not included / Non incluso / Non Inclus / Nie zawarty/ No incluido / Nao incluido

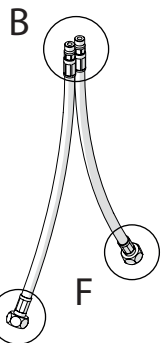
1



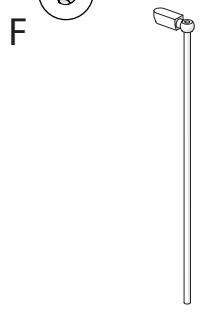
A



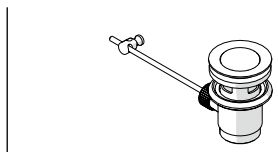
D



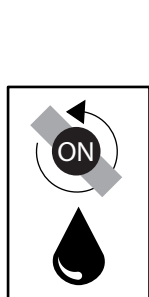
B



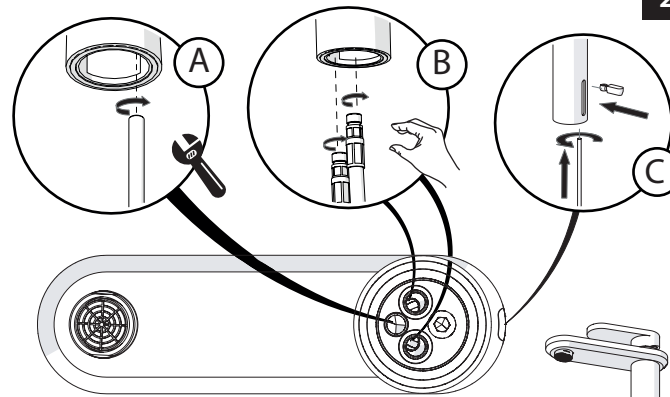
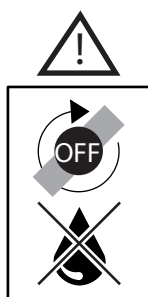
C



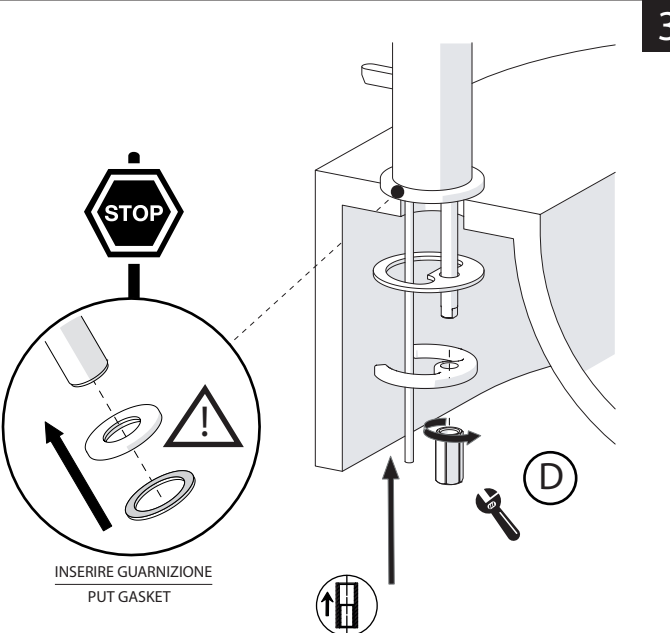
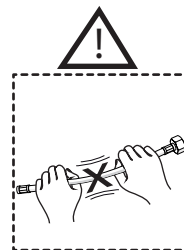
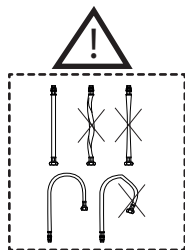
E



15s

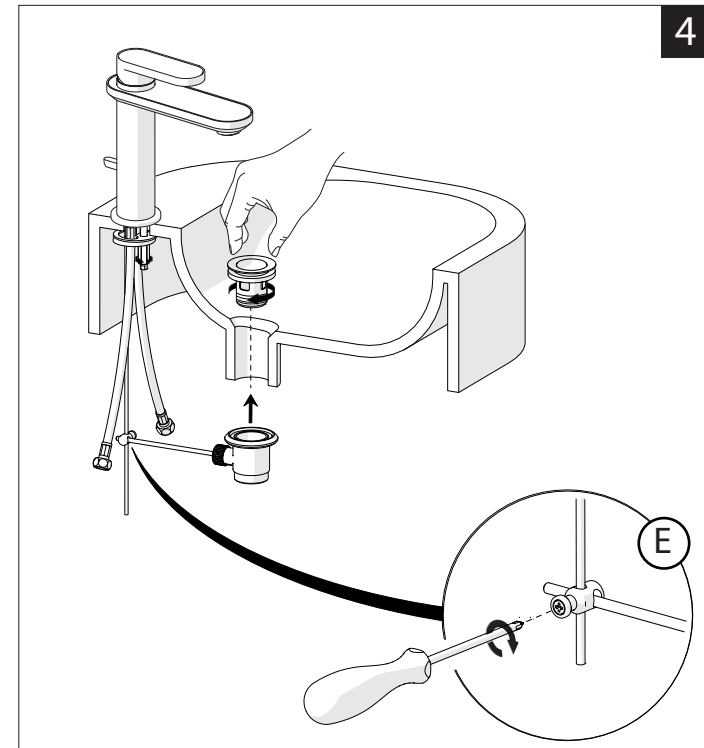


2

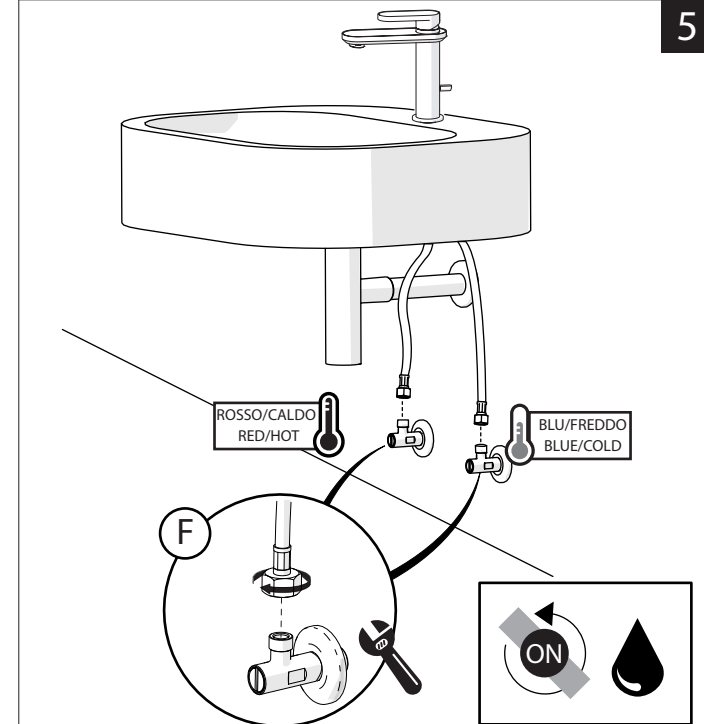


3

INSERIRE GUARNIZIONE
PUT GASKET



4

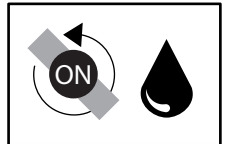


5

ROSSO/CALDO
RED/HOT

BLU/FREDDO
BLUE/COLD

F



-50%

Dispositivo limitatore "dinamico"
della portata d'acqua "50%"

"Dinamic" flow rate restrictor "50%"

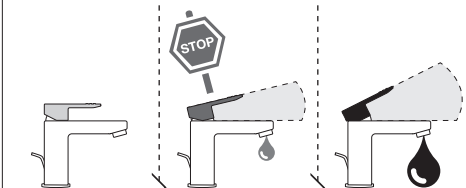


CLOSE

ECO

ON 50%

ON 100%



Posizione di chiusura

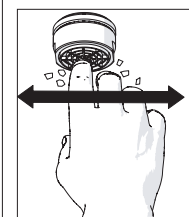
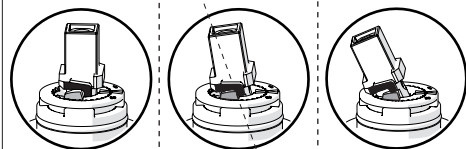
Posizione di risparmio
acqua "50% portata"

Posizione di apertura
totale 100% portata

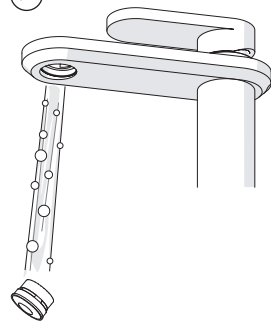
Closed position

Position of water
saving "50% capacity"

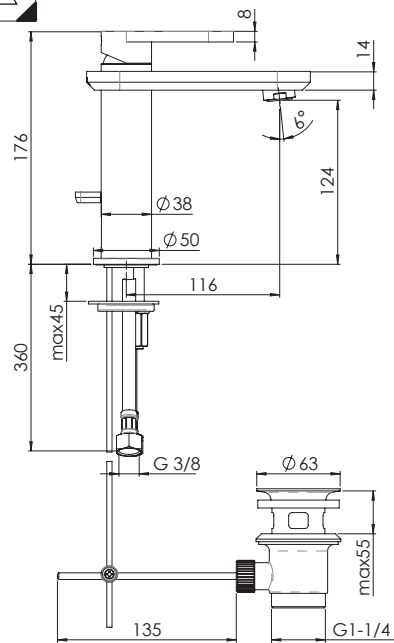
100% Fully open flow



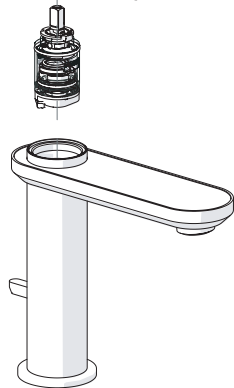
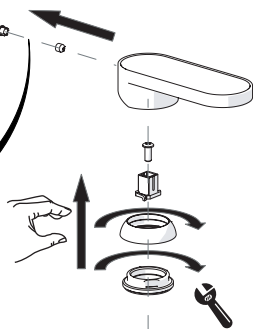
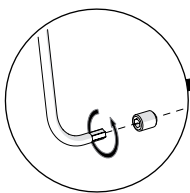
ON



6



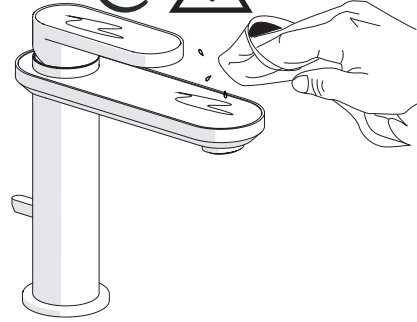
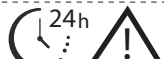
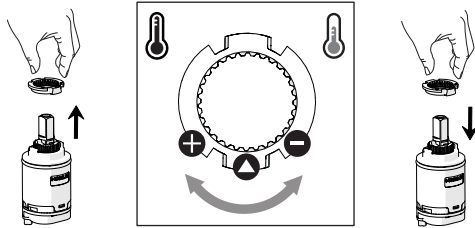
7



8

Per limitare la temperatura estrarre il limitatore
e riposizionarlo nella posizione che si desidera

Extract the limiter and put it in correct
position to limit temperature

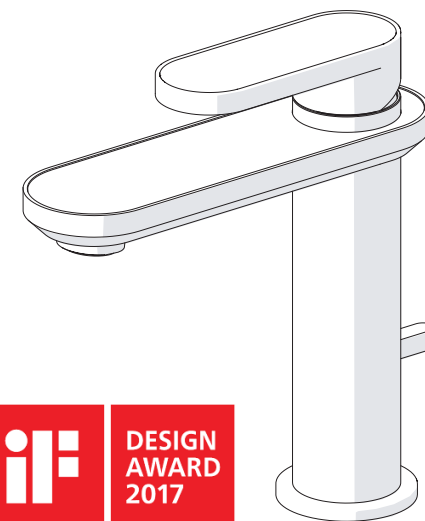


NOBILIS

The Best Technology for Water

DRESS

DS106118/1



DESIGN
AWARD
2017



www.grupponobili.it

PRIMA DI INIZIARE / BEFORE STARTING

	P bar				T ∞ C		
--	----------	--	--	--	----------	--	--

PULIZIA / CLEANING

ACQUA WATER	ALCOOL	MICROFIBRA MICROFIBER	SPUGNA SPONGE	DETERGENTI DETERGENT

IISTRDS106118#---STD



REV0.01/2016