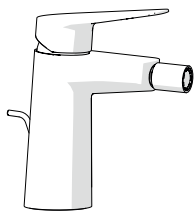
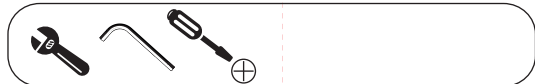
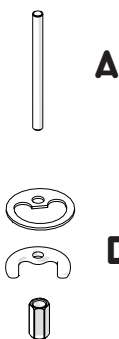


Not included / Non incluso / Non Inclus / Nie zawarty/ No incluido / Nao incluido

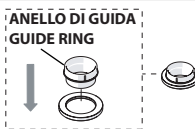
1



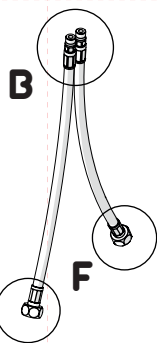
ECO



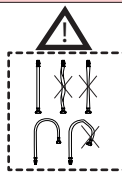
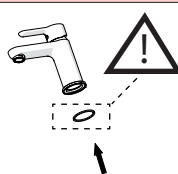
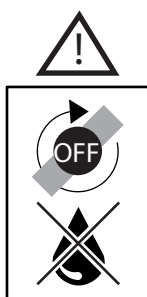
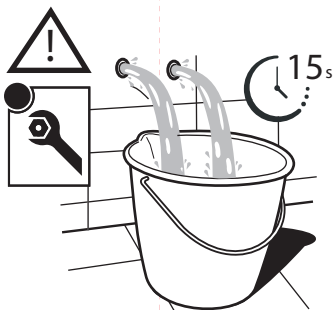
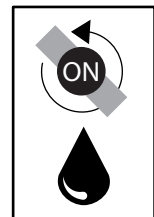
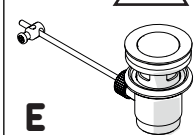
! DISPONIBILE SOLO PER ALCUNE SERIE
AVAILABLE ONLY FOR SOME SERIES



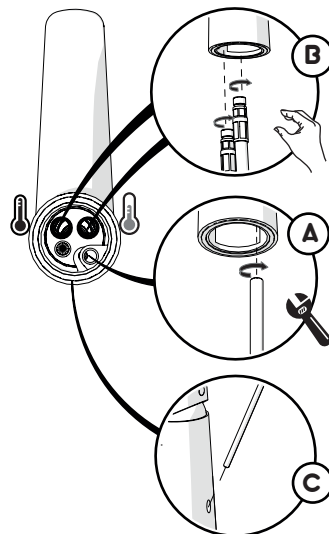
119/1



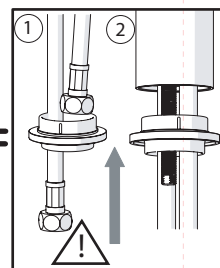
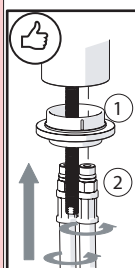
119/1
119/4



2



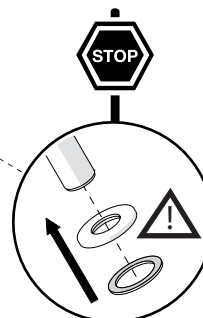
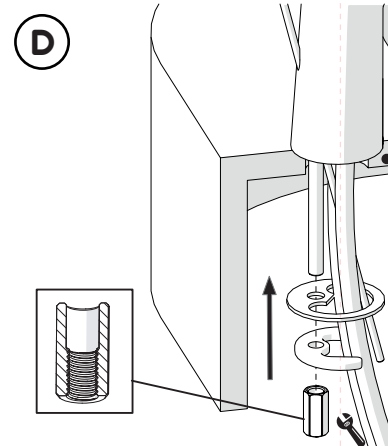
Raggio di curvatura
Bending radius
25 mm 1"



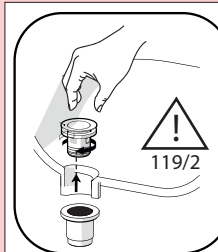
6 mm



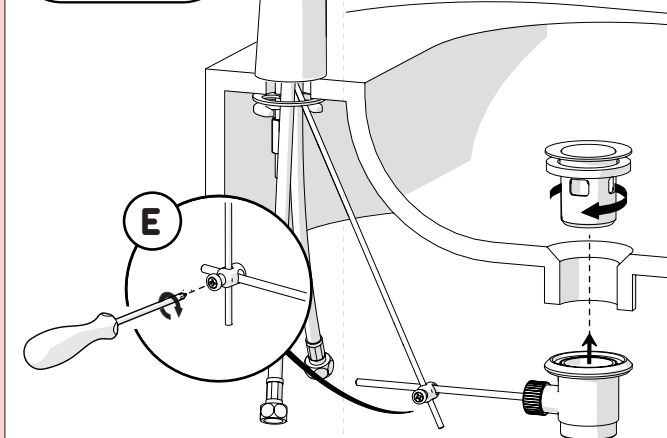
3



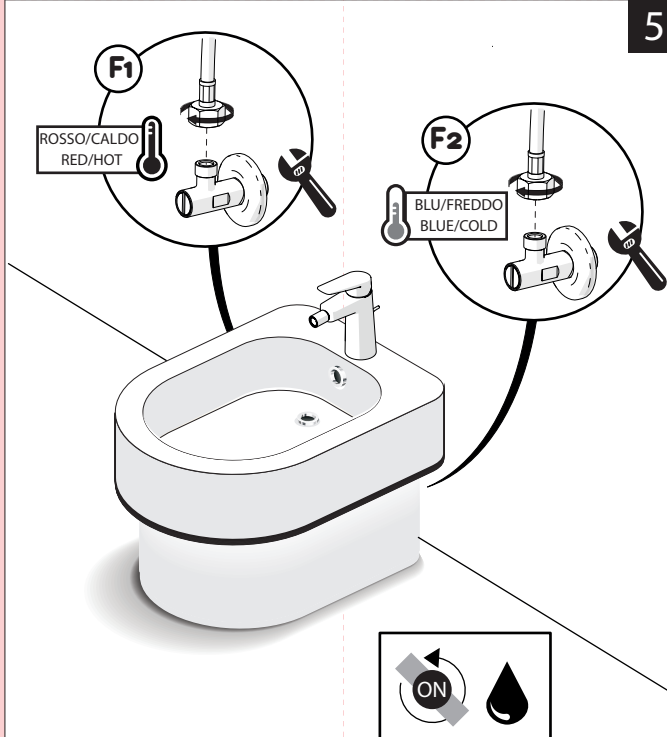
INSERIRE GUARNIZIONE
PUT GASKET



4



5



6

MAX 5 L/MIN
ECO

7

8

ECO CH3

9

Per limitare la temperatura estrarre il limitatore e riposizionarlo nella posizione che si desidera
Extract the limiter and put it in correct position to limit temperature

<p>Nessuna limitazione di temperatura</p> <p>No limitation of temperature</p>	<p>Limitazione parziale di temperatura</p> <p>Partial limitation of temperature</p>	<p>Massima limitazione Solo acqua fredda</p> <p>Maximum position Only cold water</p>
---	---	--

NOBILIS

ECO CH3

www.nobili.it

PRIMA DI INIZIARE / BEFORE STARTING

P bar	MAX 10 5 MIN	T °C	MAX 80 65 45
-------	--------------	------	--------------

PULIZIA / CLEANING

ACQUA WATER ✓	ALCOOL ALCOHOL ✓ <small>SI CROMO YES CHROME NO VERNICIATO NO PAINTED NO PVD</small>	MICROFIBRA MICROFIBER ✓	SPUGNA SPONGE ✗	DETERGENTI DETERGENT ✗
---------------	--	-------------------------	-----------------	------------------------

TUTTE LE FINITURE ALL FINISHES ACQUA E SAPONE WATER AND SOAP ✓

ASCIUGARE BENE SEMPRE ALWAYS DRY WELL