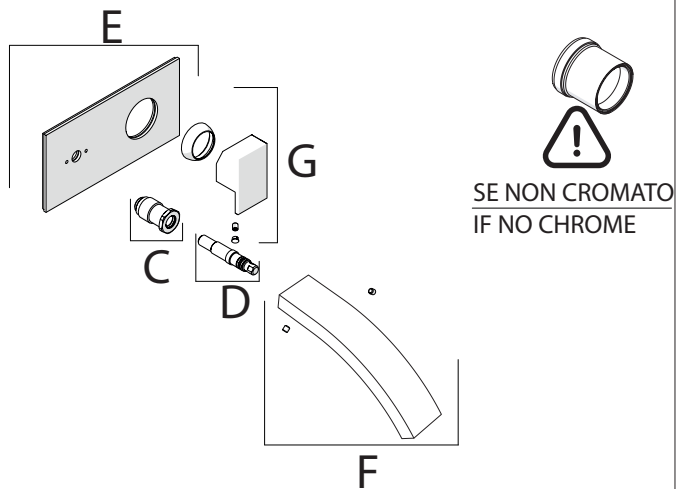
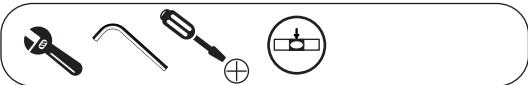


Not included / Non incluso / Non Inclus / Nie zawarty/ No incluido / Nao incluido

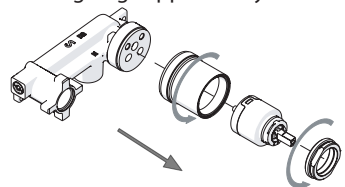


IT La finitura della parte estetica deve corrispondere a quella della parte incassata.

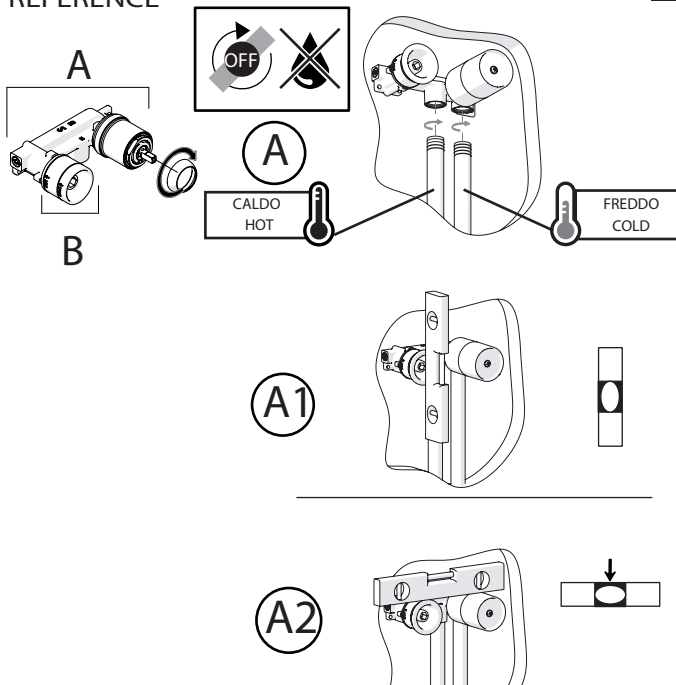
Se non corrisponde bisogna svitare l'anello CROMATO e avvitare l'anello in finitura fornito solo nel kit della parte estetica.

EN The finish of the external part must be combined with the finish of the flush-fit part.

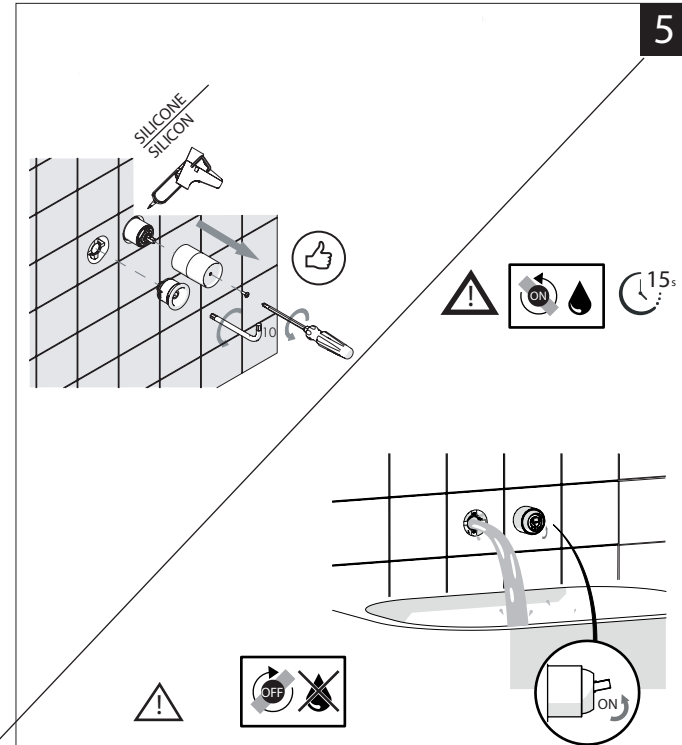
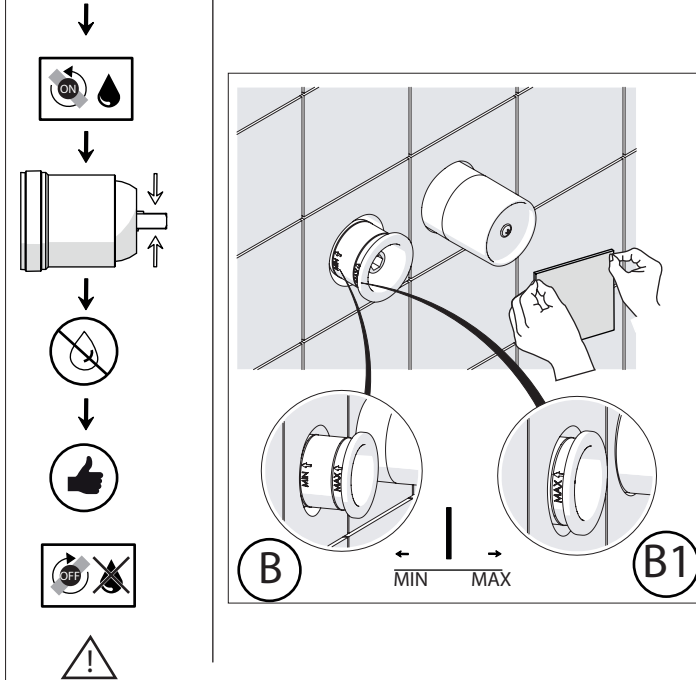
If it does not match, unscrew the CHROME ring and screw the finishing ring supplied only in the kit of the aesthetic part.



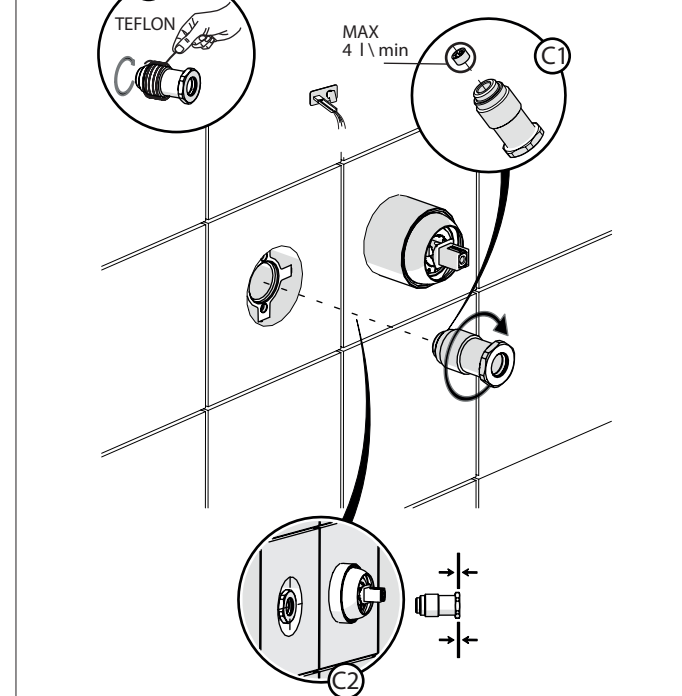
RIFERIMENTO IISTRWE81198#---STD
REFERENCE

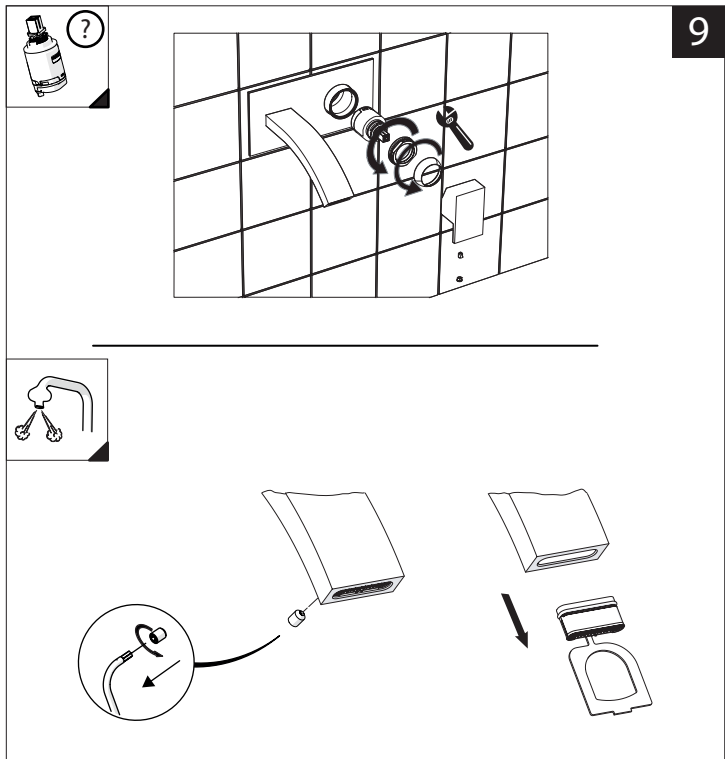
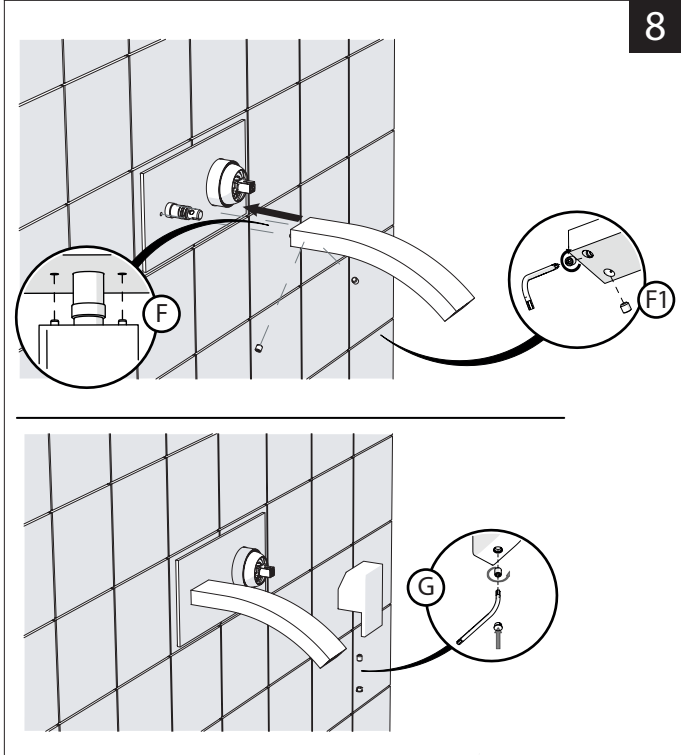
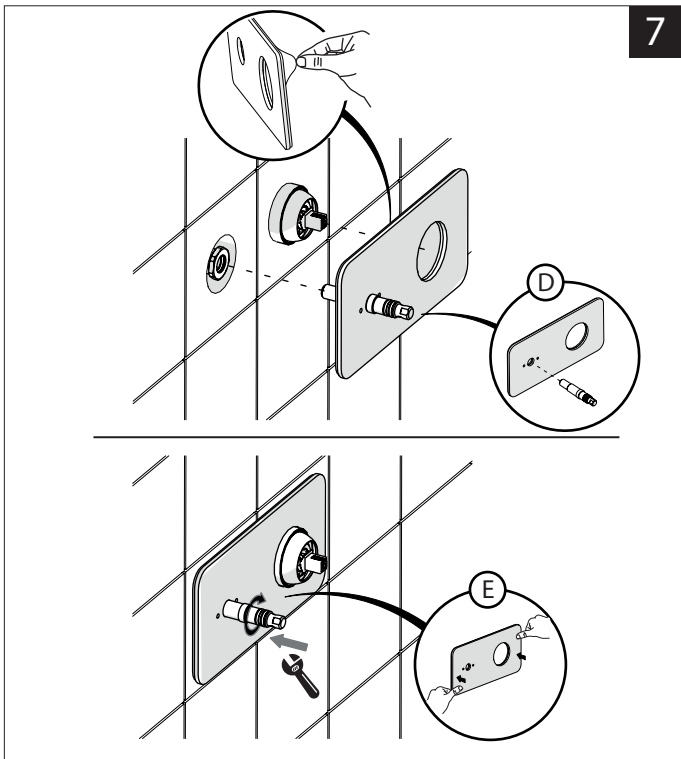


TEST



MAX 4 l/min

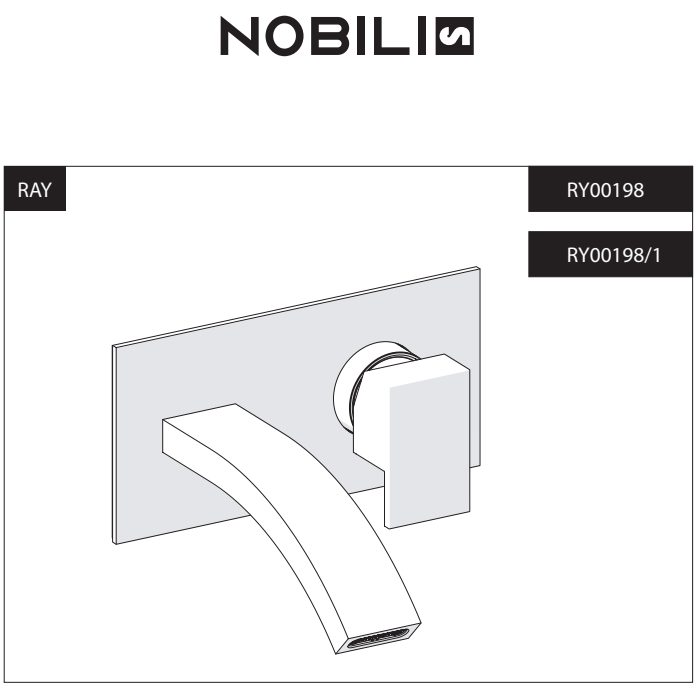




Dispositivo limitatore "dinamico" della portata d'acqua "50%"
 "Dynamic" flow rate restrictor "50%"

-50%

CLOSE	ON 50%	ON 100%
Posizione di chiusura Closed position	Posizione di risparmio acqua "50% portata" Position of water saving "50% capacity"	Posizione di apertura totale 100% portata 100% Fully open flow



PRIMA DI INIZIARE / BEFORE STARTING

	P bar		MAX 10 MIN 0,5		5		T °C		MAX 80		65 45
--	-------	--	-------------------	--	---	--	------	--	--------	--	----------

PULIZIA / CLEANING

	ACQUA WATER		ALCOOL		MICROFIBRA MICROFIBER		SPUGNA SPONGE		DETERGENTI DETERGENT
	PER VERNICIATO FOR PAINTED		ACQUA E SAPONE WATER AND SOAP						