



SPECIFICATIONS

Single control

Inox

Anti limescale aerator M 16,5 x 1

Without waste

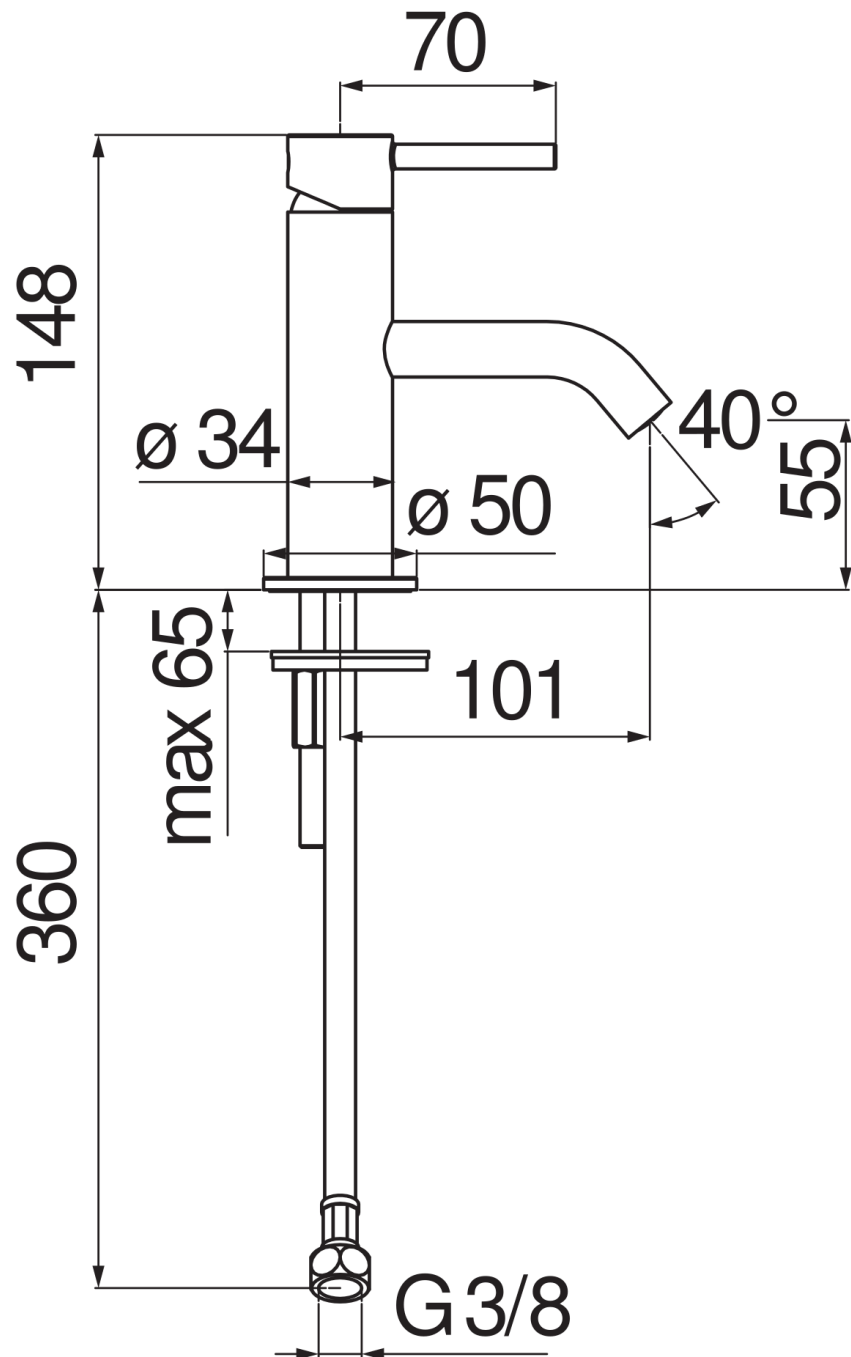
ø 3/8" stainless steel flexible pipe

50% two step cartridge for water saving

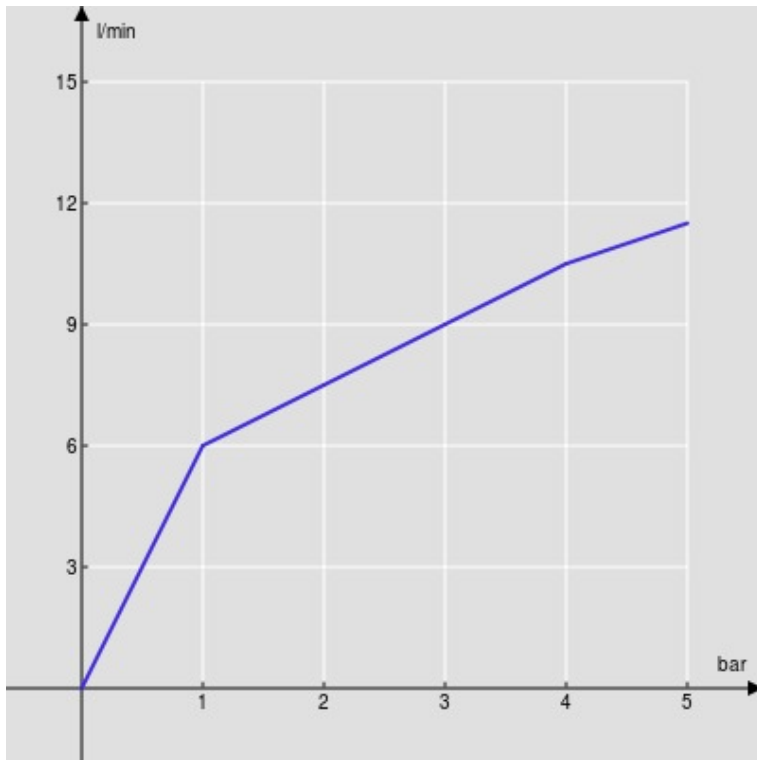
Packaging: 41,5 x 21,2 x 7,8 cm / 0,00686 m³ / 1,35 kg

CERTIFICATIONS



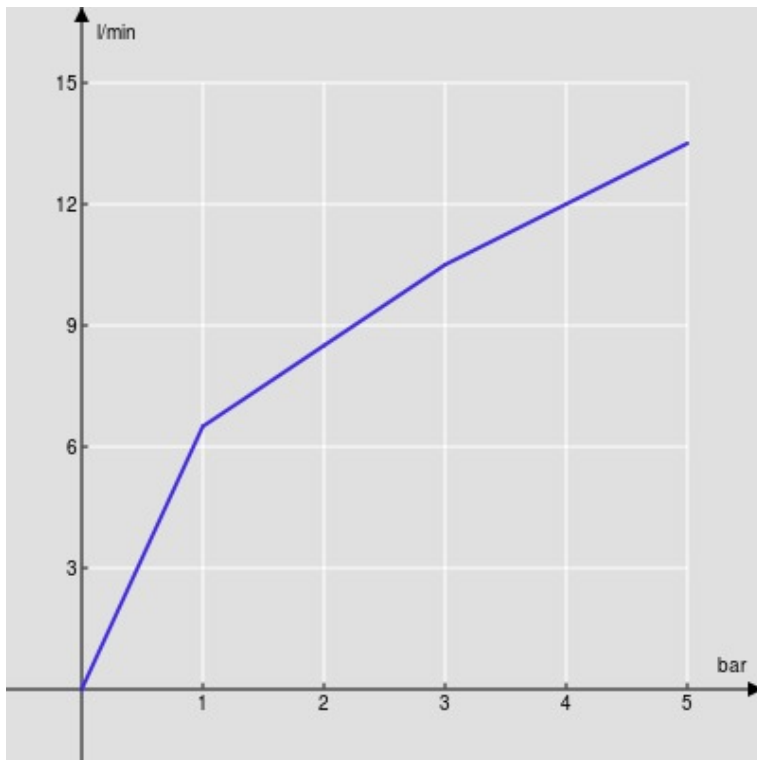


FLOW RATE DIAGRAM: HOT/COLD WATER



— Aerator

FLOW RATE DIAGRAM: MIXED WATER



— Aerator