

SPECIFICATIONS

External thermostatic mixer

Chocolate red PVD

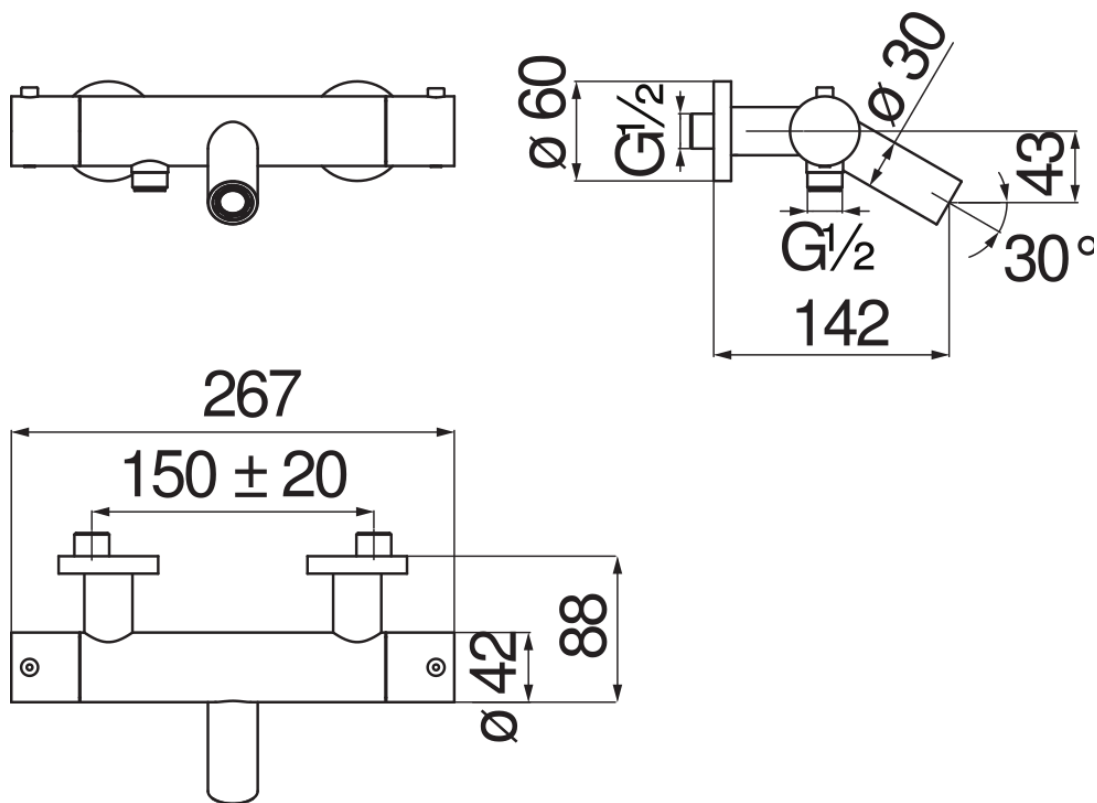
38° C safety cut-out

Non-return valves

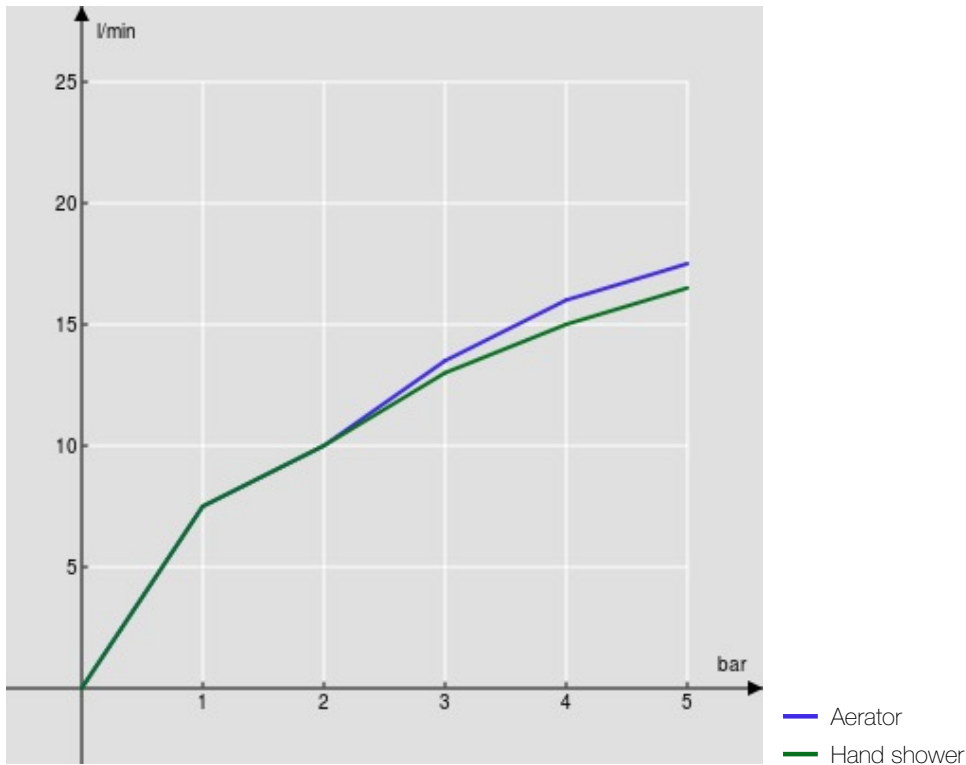
Anti limescale aerator M 24 x 1

ø 1/2" outlet

Packaging: 24 x 25 x 8 cm / 0,0048 m³ / 3,6 kg



FLOW RATE DIAGRAM: HOT/COLD WATER



FLOW RATE DIAGRAM: MIXED WATER

