

SPECIFICATIONS

External thermostatic mixer

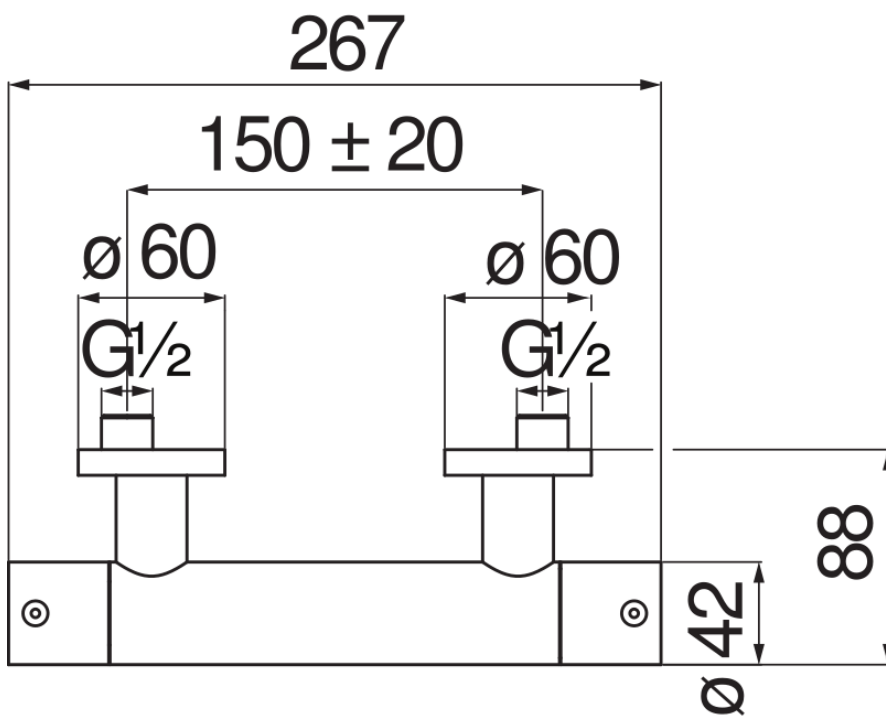
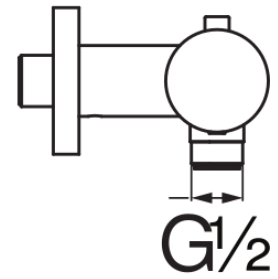
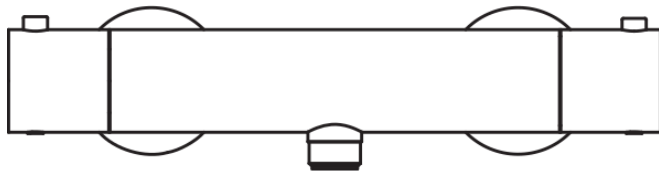
Red canyon PVD

38° C safety cut-out

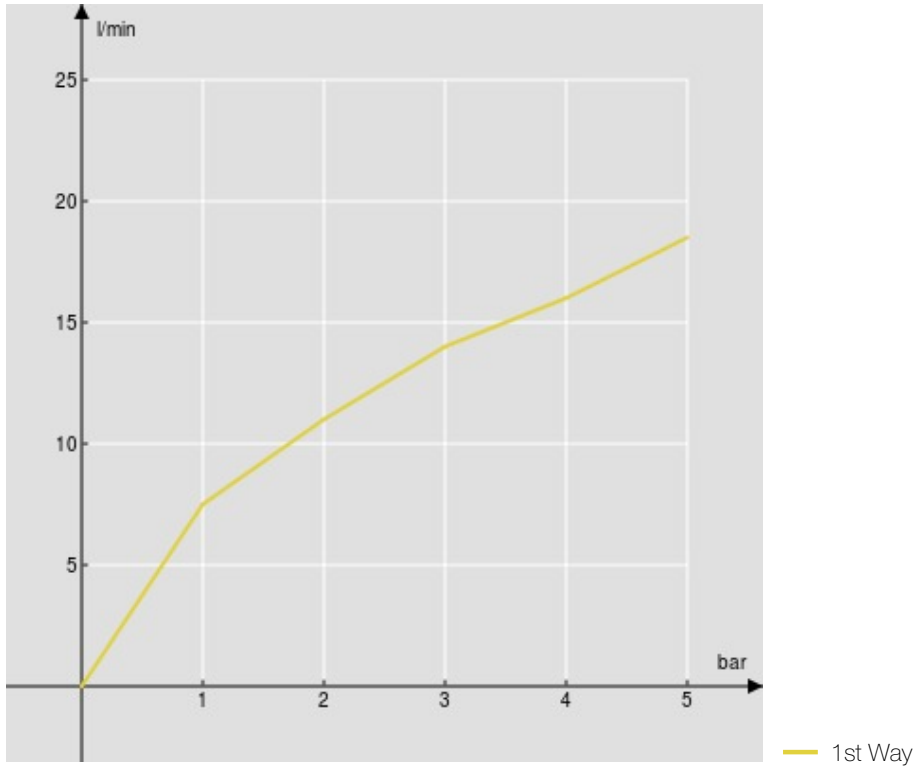
Non-return valves

ø 1/2" outlet

Packaging: 24 x 25 x 8 cm / 0,0048 m³ / 2,65 kg



FLOW RATE DIAGRAM: HOT/COLD WATER



FLOW RATE DIAGRAM: MIXED WATER

