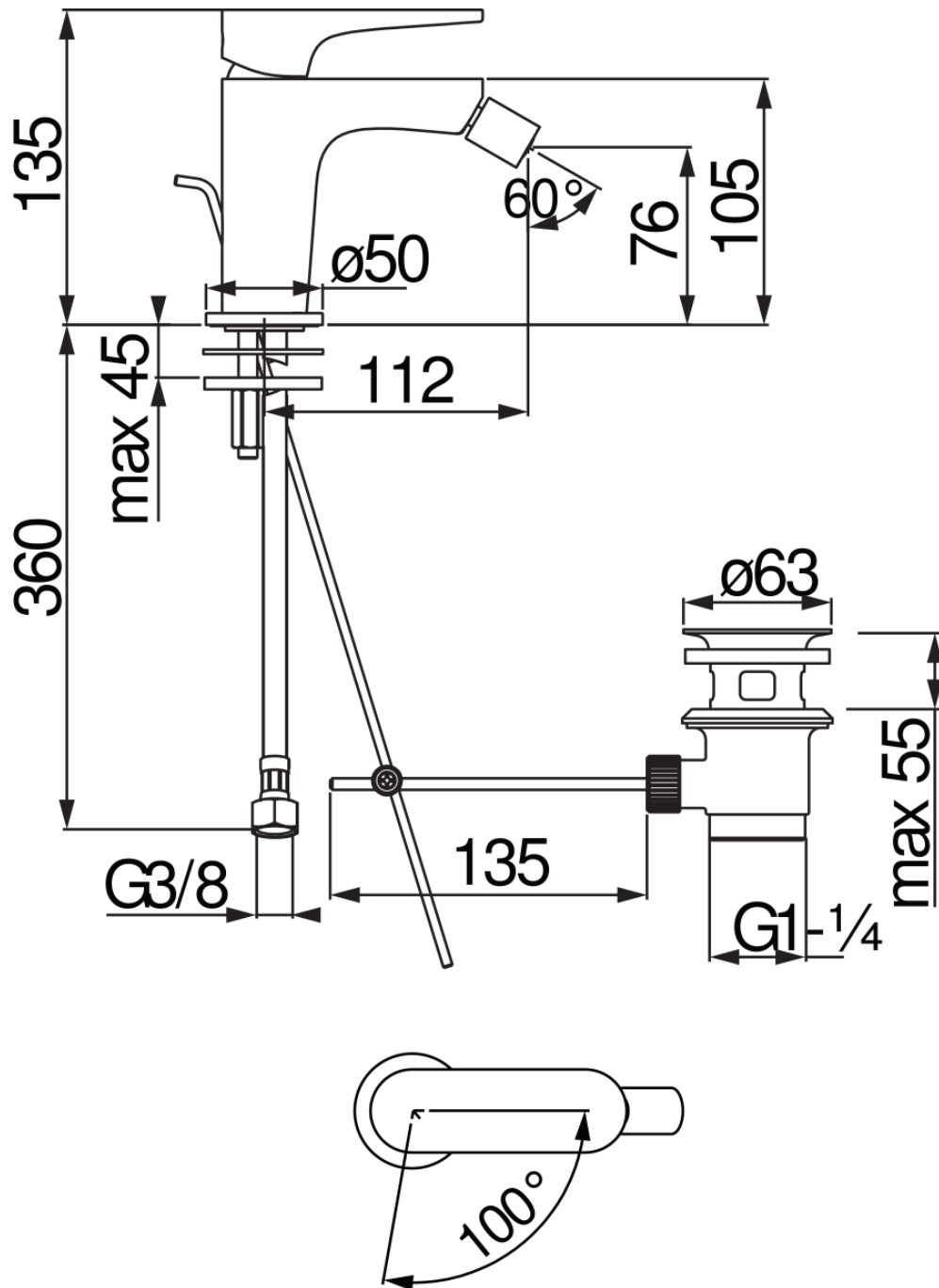




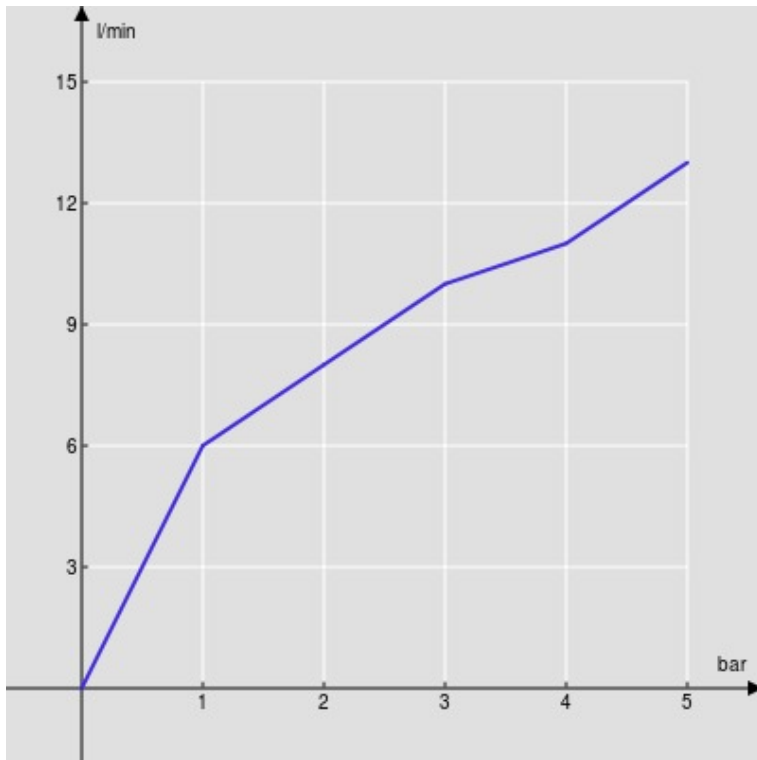
SPECIFICATIONS

Energy saving single control  
Velvet black  
Anti limescale aerator M 16,5 x 1  
5 l/min aerator included in the package  
Swivel jet  
1 1/4" waste with patented SNAP system  
ø 3/8" stainless steel flexible pipe  
Energy saving system with cold water side opening  
50% two step cartridge for water saving

Packaging: 41,5 x 16 x 7,5 cm / 0,00498 m<sup>3</sup>

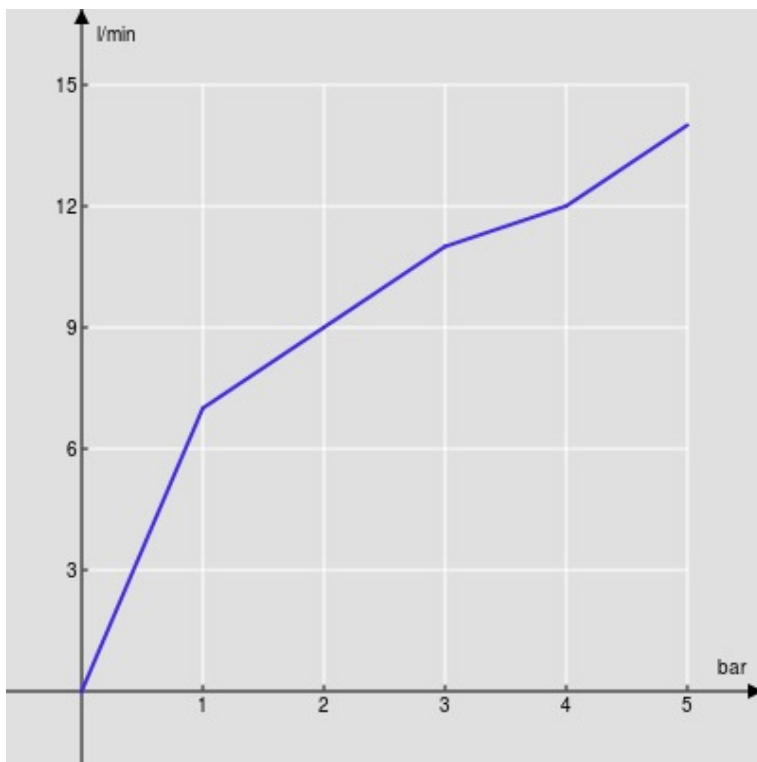


FLOW RATE DIAGRAM: HOT/COLD WATER



— Aerator

FLOW RATE DIAGRAM: MIXED WATER



— Aerator