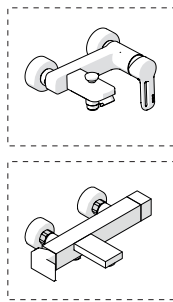
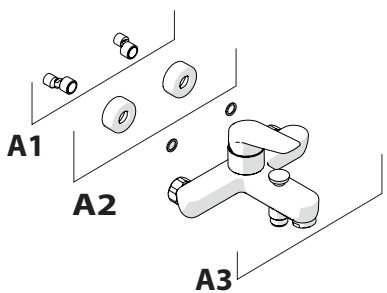


Not included / Non incluso / Non Inclus / Nie zawarty / No incluido / Nao incluido

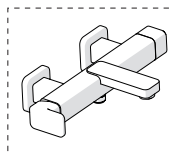
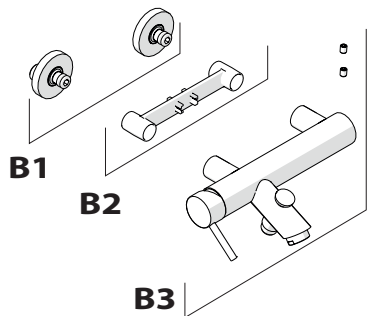
1



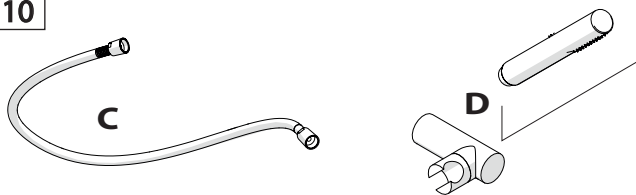
TIPOLOGIA A



TIPOLOGIA B

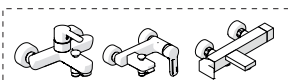


110

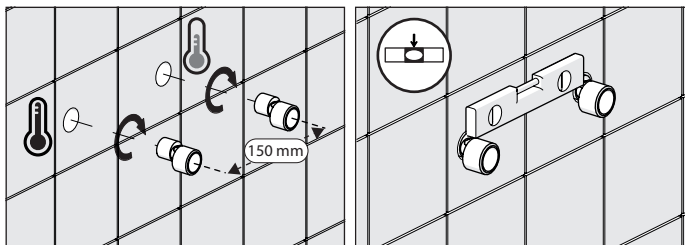


TIPOLOGIA A

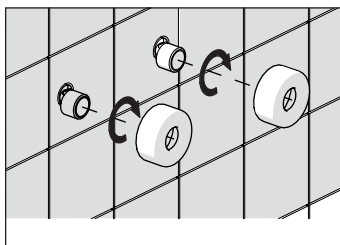
2



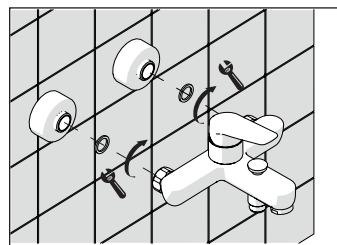
A1



A2

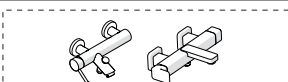


A3

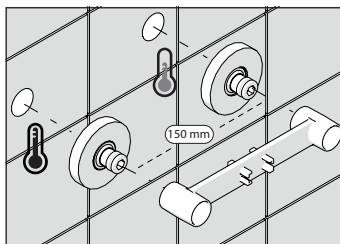


TIPOLOGIA B

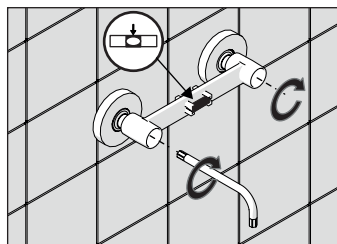
3



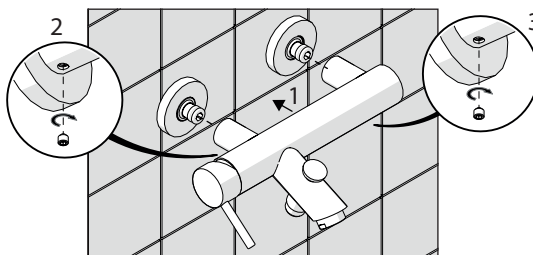
B1



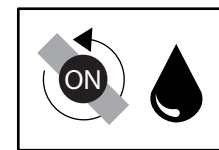
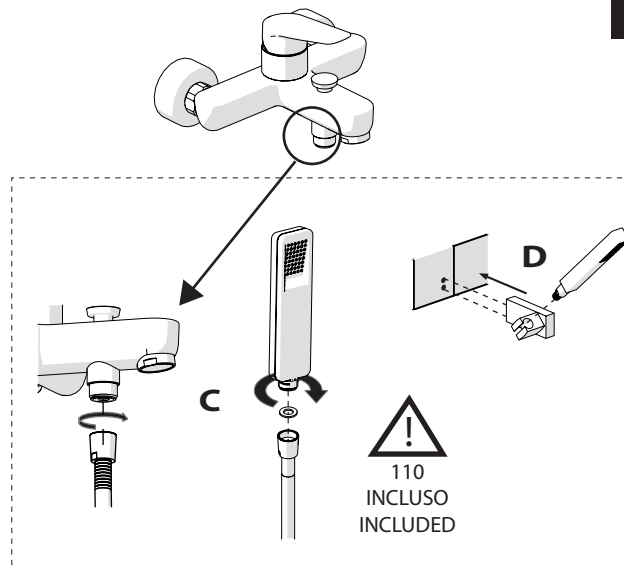
B2



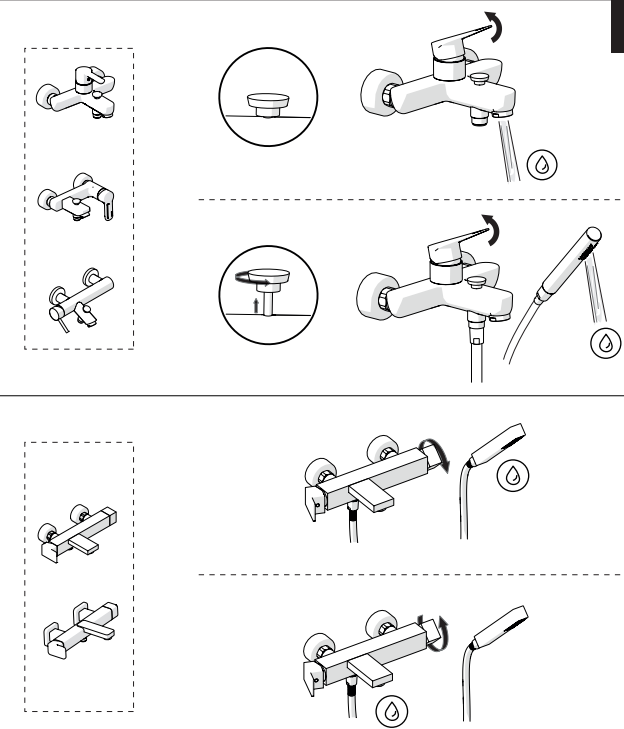
B3



4



5



-50%

Dispositivo limitatore "dinamico" della portata d'acqua "50%"

6

"Dinamic" flow rate restrictor "50%"

ECO

CLOSE	ON 50%	ON 100%
Posizione di chiusura	Posizione di risparmio acqua "50% portata"	Posizione di apertura totale 100% portata
Closed position	Position of water saving "50% capacity"	100% Fully open flow



7

! Rondella silicone
Silicone Washer

1. Remove the cap.
2. Insert the silicone washer.
3. Tighten the cap.
4. Check the washer is seated.
5. Final assembly.



Per limitare la temperatura estrarre il limitatore e riposizionarlo nella posizione che si desidera

8

Extract the limiter and put it in correct position to limit temperature

Diagram showing the limiter being rotated to different positions:

- Position 1:** Nessuna limitazione di temperatura / No limitation of temperature
- Position 2:** Limitazione parziale di temperatura / Partial limitation of temperature
- Position 3:** Massima limitazione Solo acqua fredda / Maximum position Only cold water



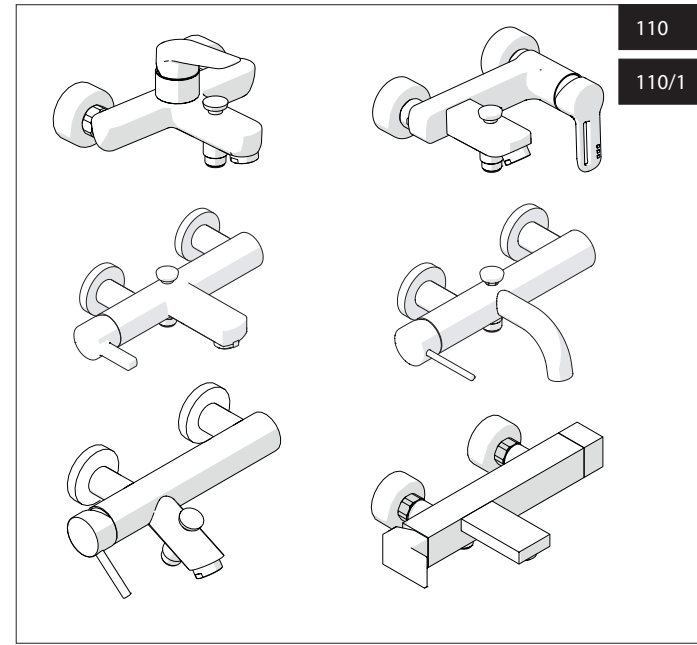
9

Diagrams illustrating faucet operation and cleaning techniques.

NOBILIS

110

110/1



www.nobili.it

PRIMA DI INIZIARE / BEFORE STARTING

	P bar		MAX 10 MIN 0,5		5		T °C		MAX 80 MIN 45
--	-------	--	-------------------	--	---	--	------	--	------------------

PULIZIA / CLEANING

	ACQUA WATER		ALCOOL		MICROFIBRA MICROFIBER		SPUGNA SPONGE		DETERGENTI DETERGENT
	TUTTE LE FINITURE ALL FINISHES ACQUA E SAPONE WATER AND SOAP			ASCIUGARE BENE SEMPRE ALWAYS DRY WELL					

IISTR00110#---STD



REV2.11/2018