

ESPECIFICACIONES

Termostático externo

Red canyon PVD

Bloqueo de seguridad 38° C

Válvulas antirretorno

Salida ø 1/2"

Embalaje: 24 x 25 x 8 cm / 0,0048 m<sup>3</sup> / 2,65 kg

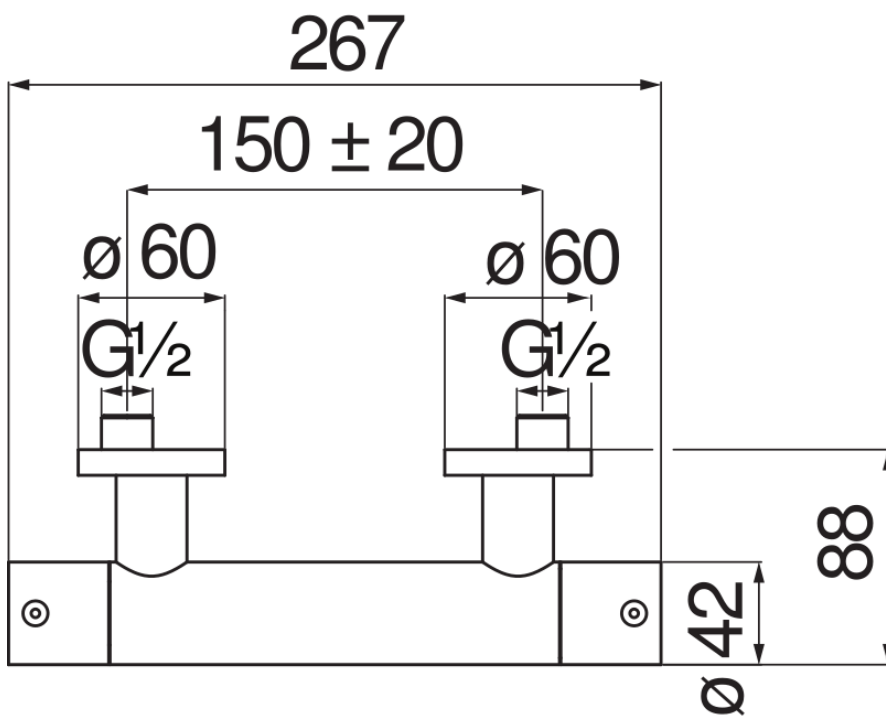
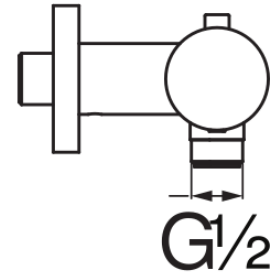
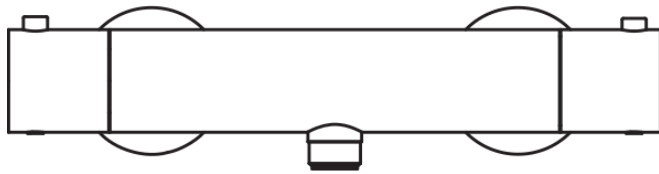


DIAGRAMA DE FLUJO: AGUA CALIENTE/FRIA

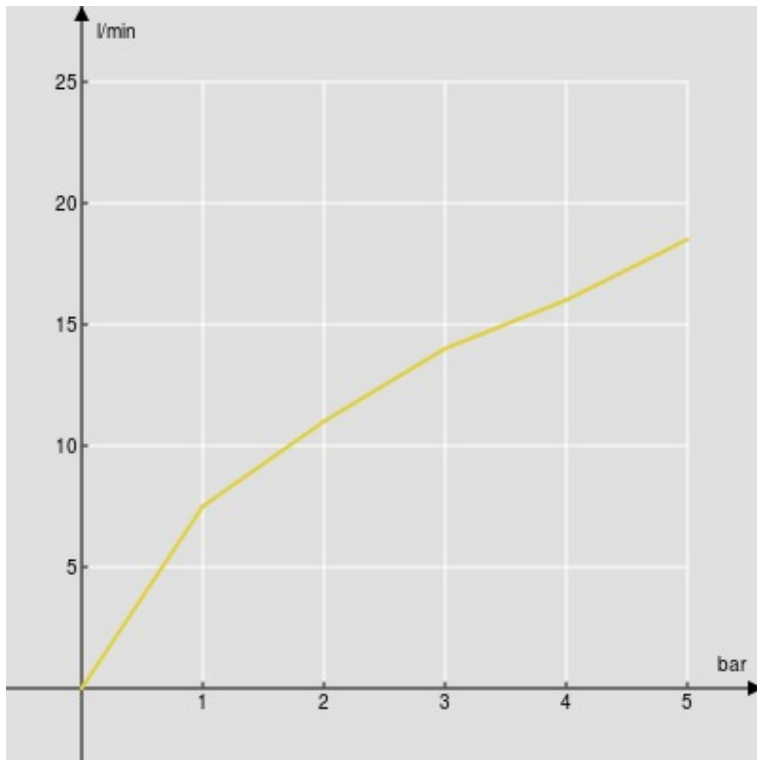


DIAGRAMA DE FLUJO: AGUA MEZCLADA

