



CARACTÉRISTIQUES

Mitigeur thermostatique mural

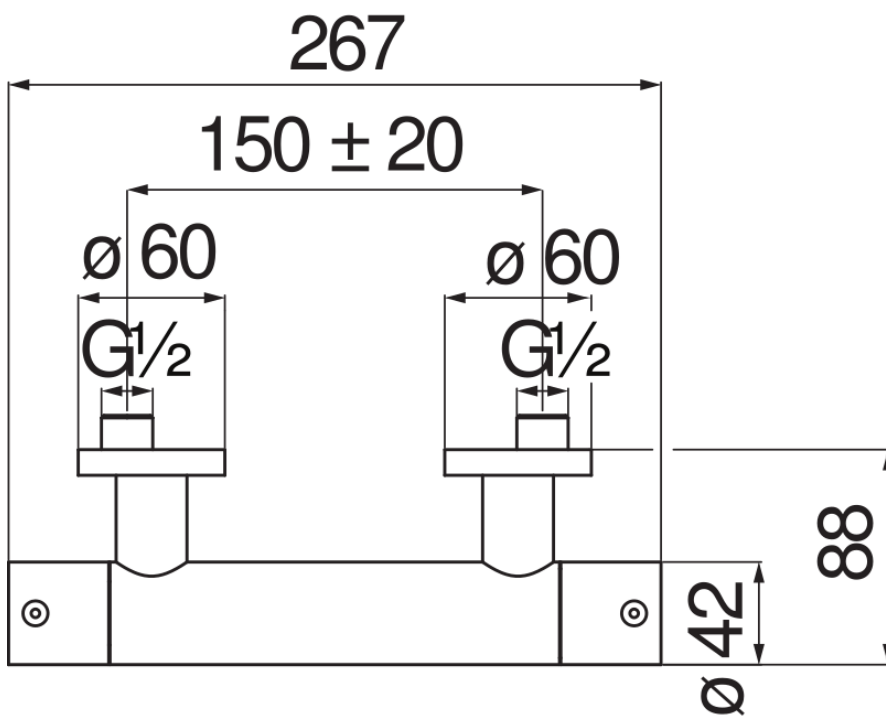
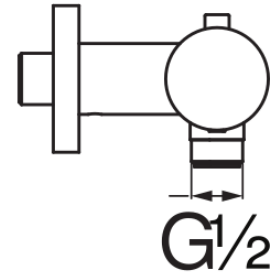
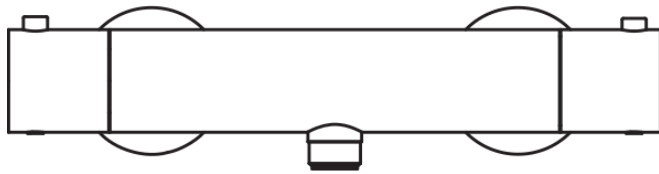
Inox

Blocage de sécurité à 38° C

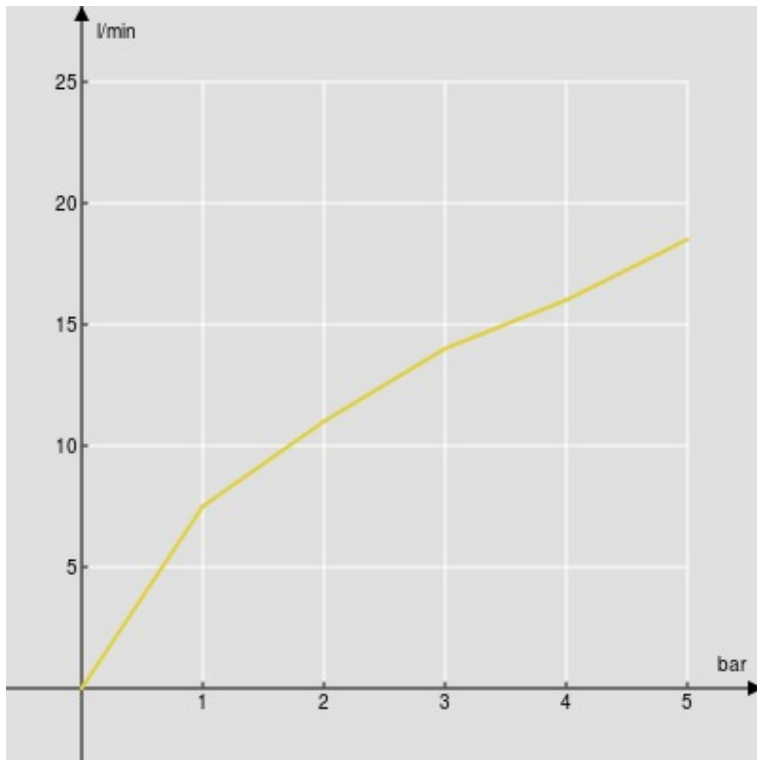
Clapets anti-retour

Sortie ø 1/2"

Emballage: 24 x 25 x 8 cm / 0,0048 m³ / 2,65 kg

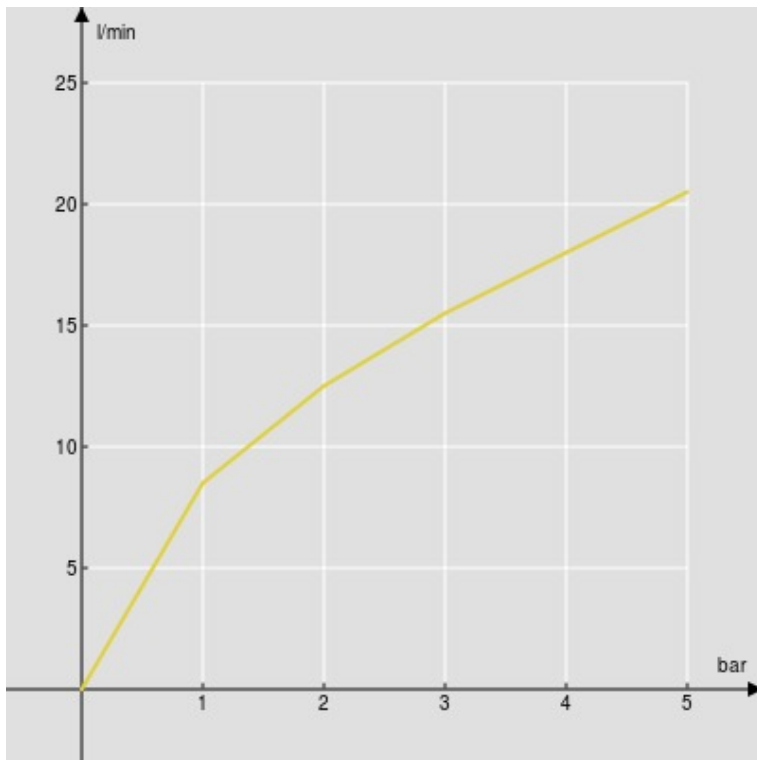


GRAPHIQUE DE DÉBIT: CHAUDE/FROIDE



— 1er voies

GRAPHIQUE DE DÉBIT: MITIGÉE



— 1er voies