

#### SPECIFICATIONS

External single control

Velvet black

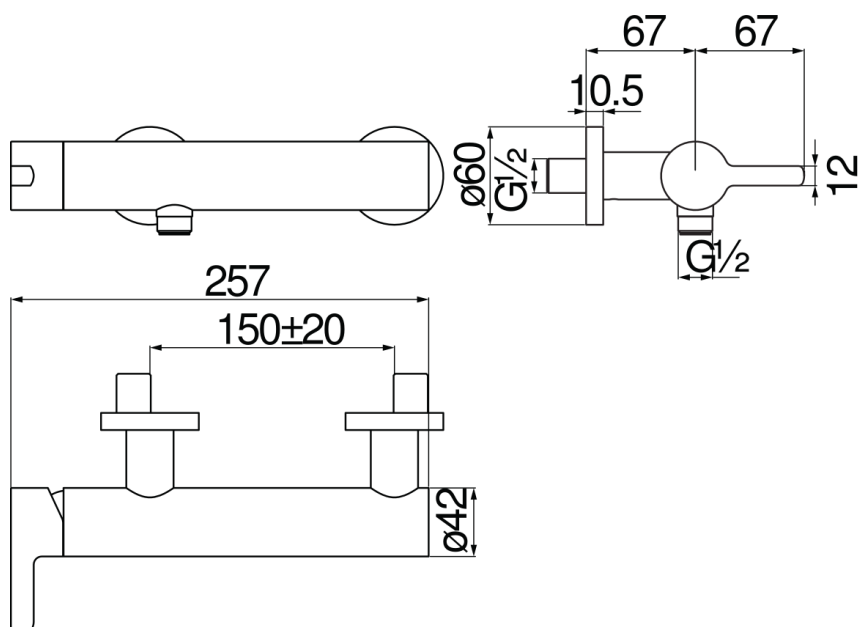
ø 1/2" outlet

50% two step cartridge for water saving

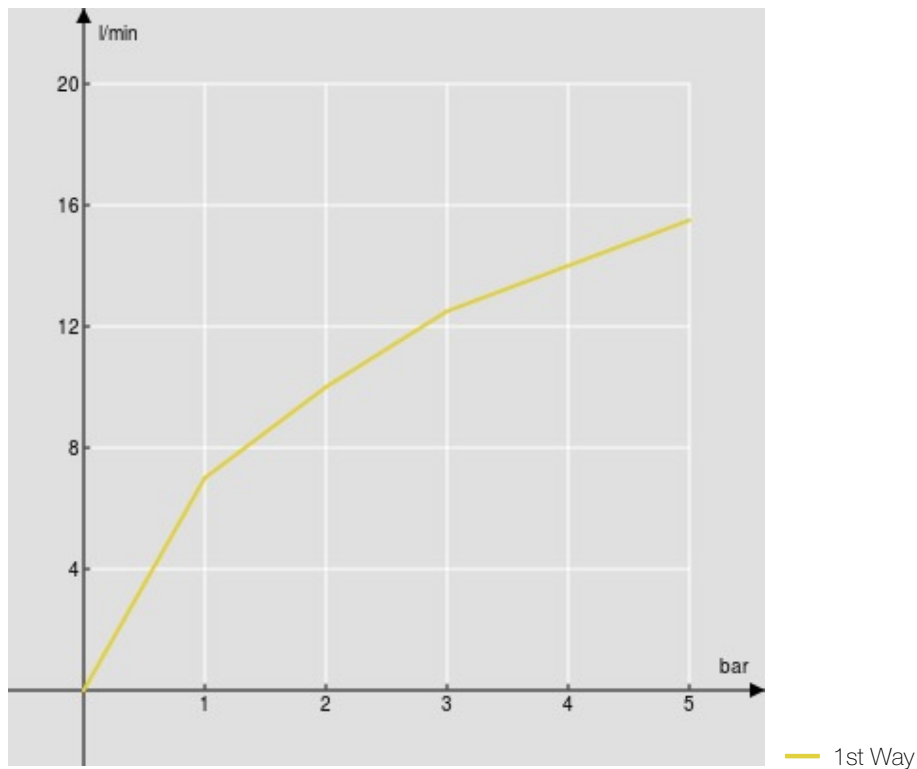
Packaging: 41 x 21 x 7 cm / 0,00603 m<sup>3</sup> / 2,23 kg

#### CERTIFICATIONS





FLOW RATE DIAGRAM: HOT/COLD WATER



FLOW RATE DIAGRAM: MIXED WATER

